



# GUIDE BOOK FOR INTERNATIONAL EXCHANGE STUDENTS

# GUIDE BOOK

## for International Exchange Students

---

- 03 Welcome
- 04 YU at a Glance
- 05 Evaluation
- 06 Sisterhood Relationships
- 08 Academics
- 12 Life on Campus
- 16 Affiliated Organizations
- 18 Campus Map

# WELCOME TO YEUNGNAM UNIVERSITY

Welcome all the international exchange students!

It gives us a great pleasure to extend warmest welcome to all of you here at Yeungnam, and to design your future with us.

Since its foundation, Yeungnam University has enhanced a reputation as a prestigious university, with about 209,000 graduates who have been playing important roles domestically and internationally. Geared with its tremendous potentiality originating from its history and tradition, Yeungnam University is regenerating itself through the “Internalization” project along with a new resolution.

It has excellent human resources such as energetic and creative students, and the renowned and dedicated faculty, as well as the state-of-the-art facilities and well-organized administrative systems on the widest and the most beautiful campus in Korea.

All the faculty and staff at Yeungnam will create a friendly and sustainable environments for the effective interactions and dynamics in the campus-community.

We will also do our best to be qualified for competence with the other global schools.



# YU at a Glance

## Established

- 1947. 09 Establishment of Daegu College approved
- 1950. 04 Establishment of Chunggu College approved
- 1967. 12 The educational foundation, Yeungnam Academy, established  
(by the merger of Daegu College and Chunggu College)  
Establishment of Yeungnam University approved

## Members

(As of the year 2015)

### Enrolled Students (34,527)

- Undergraduates : 31,133
- Graduates & Professionals : 3,394

### Faculty (901)

- Professors : 453
- Associate Professors : 181
- Assistant Professors : 128
- International Professors : 139

### Graduates (211,020)

- Undergraduates : 183,081
- General Graduates : 12,928
- Professional and Special Graduates : 11,664
- Doctors : 3,321

### Staff (298)

- Administrative Staff : 205
- Librarians : 23
- Specialists : 13
- Technicians : 57

## Campus

**Gyeongsan Campus** Land 2,645,456m<sup>2</sup>, 169 Buildings 431,085m<sup>2</sup>

**Daemyeong-dong Campus** Land 69,527m<sup>2</sup>, 6 Buildings 25,133m<sup>2</sup>

## Slogan

**YU the Future**

**YU the Future**

## UI





## Evaluation

(As of the year 2015)

- Attains an 'A' grade in "University Reconstructing Evaluation" by the Ministry of Education
- Awarded the Best Practice prize by Ministry of Employment & Labor
- Ranked 3rd in the World e-learning in "Wharton School and QS Education Innovation Award"
- Ranked 14th among Korean universities in "The World University Rankings"
- Ranked 16th in Asia in the academic peer review of research capabilities in "QS University rankings"
- Ranked 1st among local private universities in the 2015 College Evaluations by "Joongang Ilbo"
- YU Law School records 1st pass rate in the 2015 state-run bar exam after recording 2nd one in 2014
- Ranked 9th for the number of alumni who are CEOs in Korea's Top 30 Companies
- Ranked 6th for the number of alumni who are CEOs in companies listed on the KOSDAQ
- Ranked 3rd for the number of alumni who are CEOs of the Hyundai Motor Company

# Sisterhood Relationships

## Europe

### Major Institutions

- University of Oxford
- University of Bordeaux
- University of Wuerzburg
- Amsterdam University of Applied Sciences

## China

### Major Institutions

- Xi'an Jiaotong University
- Shanghai University
- Lanzhou University
- The Hong Kong Institute of Education

## South-East Asia

### Major Institutions

- Chulalongkorn University
- University of Malaya
- Nanyang Polytechnic
- Indian Institute of Technology Guwahati

## Australia

### Major Institutions

- University of Adelaide
- Macquarie University
- University of the Sunshine Coast



# 43 Countries / 323 Universities and Institutes

(As of March, 2016)



## Japan

### Major Institutions

- Tohoku University
- Gunma University
- Hiroshima University
- Yokohama National University

## North America

### Major Institutions

- University of California, LA
- Texas Tech University
- University of Nebraska at Omaha
- University of Alabama, Tuscaloosa

## South America

### Major Institutions

- Tecnológico de Monterrey
- Universidade Estadual de Campinas (UNICAMP)

# Academics

## Undergraduate Colleges and Schools

### Liberal Arts

<http://liberalart.yu.ac.kr>

Korean Language & Literature / Chinese Language & Culture / Japanese Language & Literature / English Language & Literature / European Language & Culture : French Language & Literature, German Language & Culture / Philosophy / History / Cultural Anthropology / Psychology / Sociology / Media and Communication

### Sciences

<http://sci.yu.ac.kr>

Mathematics / Statistics / Physics / Chemistry & Biochemistry / Life Sciences

### Engineering

<http://eng.yu.ac.kr>

Civil Engineering / Environmental Engineering / Urban Planning & Engineering / Mechanical Engineering / Materials Science & Engineering / Electrical Engineering / Electronic Engineering / Computer Engineering / Information & Communication Engineering / Chemical Engineering / Textile Engineering & Technology

### Law

<http://law.yu.ac.kr>

Law

### Political Science & Public Administration

<http://law.yu.ac.kr>

Political Science & Diplomacy / Public Administration / Saemaoul Studies and International Development / Police Administration / Military Studies

### Business & Economics

<http://cce.yu.ac.kr>

Economics & Finance / International Economics & Business

### Business

<http://sob.yu.ac.kr>

Business Administration / Accounting and Taxation

### Medicine

<http://yumc.yu.ac.kr>

Premedical Course / Medicine

### Pharmacy

<http://pharm.yu.ac.kr>

Pharmacy : Pharmacy / Industrial Pharmacy

### Life & Applied Sciences

Food Economics & Service / Horticulture & Life Science / Forest Resources & Landscape Architecture / Food Science & Technology / Biotechnology / Medical Biotechnology

### Human Ecology & Kinesiology

<http://chek.yu.ac.kr>

Family & Housing Studies / Food & Nutrition / Kinesiology : Sport Science, Dance / Clothing & Fashion

### Education

<http://education.yu.ac.kr>

Education / Korean Language Education / English Language Education / Archaic Sino-Korean Education / Mathematics Education / Early Childhood Education / Special Physical Education

### Design & Art

<http://art.yu.ac.kr>

Fine Arts : Painting, Trans Art / Visual Communication Design / Industrial Design / Living Products Design

### Music

<http://music.yu.ac.kr>

Music : Composition, Korean Music / Vocal Music / Instrumental Music : Piano, Orchestral Instruments

### Basic Studies

<http://cbs.yu.ac.kr>

School of General Education / Chunma Honors School / Free Majors

### International Studies

International Relations and Global Governance / Global Business and Economics / Regional and Comparative Studies / International Communication

### Architecture

Architecture (5 year program) / Architectural engineering (4 year program) / Architectural Design (4 year program)





Yeungnam University (YU) has two campuses; Gyeongsan Campus is the main one located on 2,645,456m<sup>2</sup> and Daegu Campus with the University Medical Center is located in Daemyung-dong in the city of Daegu.

Currently, there are 14 colleges, one (1) evening program, two (2) independent schools, one (1) graduate school, Law School and Nine (9) Special Graduate Schools. YU consists of 31,133 undergraduate students, 3,394 graduate students, and 1,199 faculty members and staff with fine facilities and academic organizations. The university library has over 1,820,000 volumes, and the university museum holds the distinction of being named 'Best Cultural Facility'. There are also 19 auxiliary organizations and 44 academic research institutes .

## Graduate Programs

### Graduate School

### Professional Graduate School

-Law School

### Special Graduate Schools

- Graduate School of Business Administration
- Graduate School of Public Administration
- Graduate School of Arts & Design
- Graduate School of Environment & Public Health Studies
- Graduate School of Sports Science
- Graduate School of Clinical Pharmacy
- Graduate School of Education
- Graduate School of Engineering
- Park Chung Hee School of Policy and Saemaul

# Academic

Mechanical  
Engineering

ME is  
Ubiquitous

Engineering  
in high  
demand &  
expectations

From  
Imagin  
to  
Realiza

1st semester  
(Spring semester)

April

8th week of the semester  
Mid-term exam

June

16th week of the semester  
Final exam  
Last week of June  
Beginning summer vacation

March

1st week  
Beginning classes

2nd semester  
(Fall semester)

August

3rd week of August  
Registration & signing up classes  
Last week of August  
Beginning classes

December

16th week of the semester  
Final exam  
3rd week of December  
Beginning winter vacation

October

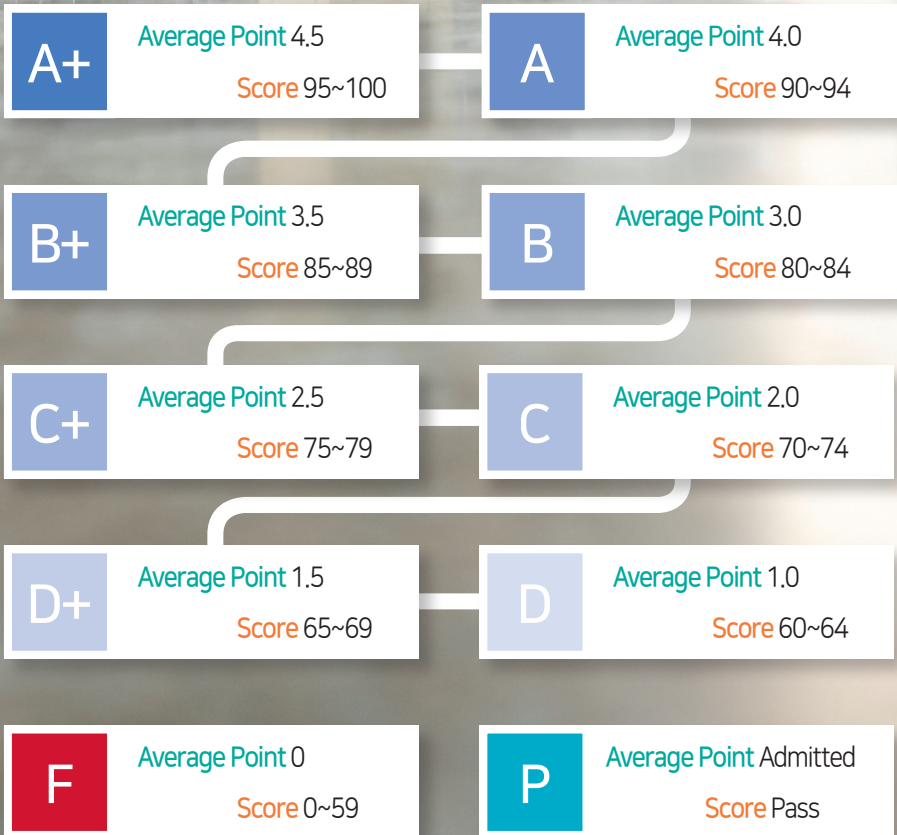
8th week of the semester  
Mid-term exam

February

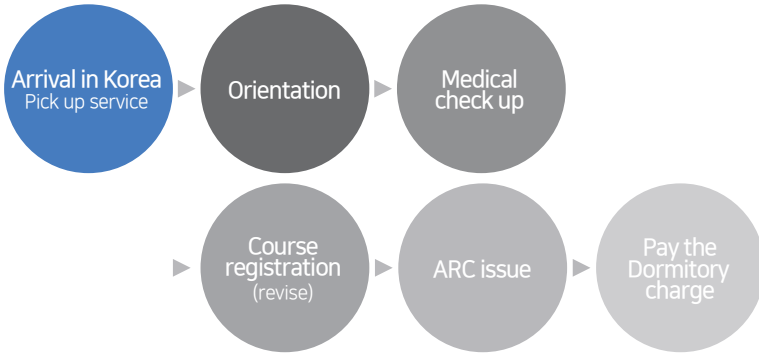
3rd week of February  
Registration &  
signing up classes



# Grading System



# Life on Campus



## ■ Pick-up service

The office of international Cooperation provide pick-up service when you arrived at Daegu or Gyeongosan

## ■ Alien registration card (issue/return)

All international exchange students are required to report to the Office of International Cooperation as soon as possible on arrival, to receive information about Immigration(alien registration card) and campus rules.

For Issue : One (1) photo(white-backgrounded)

KRW 30,000

Alien registration card application form At the Immigration Office

For Return : When the students who are permanently departing Korea

At the departure airport

If you Failure to return the ARC, it will result in fine up to 1,000,000Won for breach of Immigration

## ■ Student ID Card

With ARC, the student can issue Students ID card at Daegu Bank.

With this ID card, you can use libraries, rent the books and check the attendance.

## ■ Insurance

All of the international exchange students must purchase medical insurance.

Costs : US\$200(about) for a year

Covers : US\$100,000(about)

\*Purchased in the home country is



## Dormitory

<http://edormi.yu.ac.kr>

All campus facilities are in walking distance from the residence halls, and the residents can build their academic and personal competences by fully utilizing the accommodation at the university. Your own cooking utensils are not permitted, but all of the residents can join the optional meal plan.

### YU Dormitory(1 semester)

Type of Room	Management Fee	Student Council Fee	Meal Plan
Double	KRW 515,000	KRW 10,000	KRW 674,000
	KRW 544,000	KRW 10,000	KRW 674,000
	KRW 607,000	KRW 10,000	KRW 674,000
Quadruple	KRW 463,000	KRW 10,000	KRW 674,000
	KRW 604,000	KRW 10,000	KRW 674,000



## Libraries

### Operating Hours

#### · Library

Library during semester : 9:00~22:00 on Weekdays, 09:00~13:00 on Saturday

Vacation : 10:00~17:00 on weekdays, closed on Saturday

#### · Reading rooms are open 24hours, 365 days a year

### Circulation

For undergraduate students loaning up to 10 books & returning within 14 days

## Healthcare Service

All of international exchange students must observe Yeungnam University Health Care Policy. Therefore, all international exchange students must pay health care service fee at KRW 15,000 per semester. The service covers medical cares in case of simple diseases such as cold, dental treatment with reimbursement of up to US\$100.



## Wireless LAN service

Connect to "YU-AP" from wireless LAN SSID list, Opening any website will show login page.  
Enter your credentials to establish internet connection.

## Post office

For the postal service, please visit the Post Office located on the 1st floor in the Amphitheater.  
Its business hour is from 09:00 to 17:00 during the weekdays.

## Other services for students

Convenient facilities such as student cafeteria, convenient stores, stationery are on campus for the students.

- Three (3) cafeterias on campus are serving for the students from 07:00 to 19:00.
- Several convenient stores are available from 08:00 to 24:00.
- In the International Center, there are bookstore, fast food restaurant, stationery, travel agent, sports goods shop, and optician on the 1st floor.

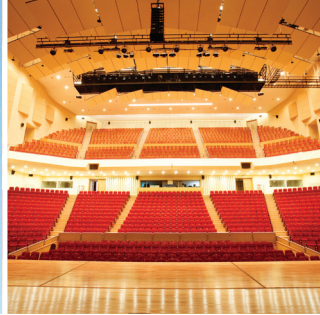
# AFFILIATED ORGANIZATIONS







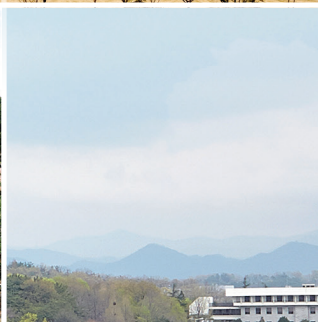
MEDICAL CENTER



CHUNMA ARTS CENTER



FOLKLORE GARDEN



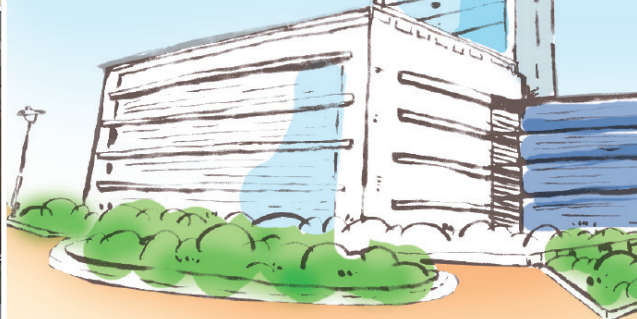
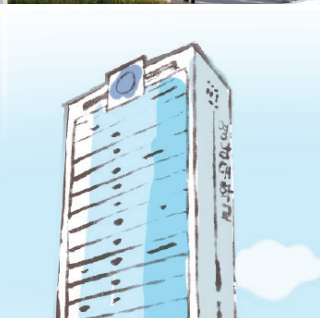
GYEONGBUK GLOBAL EXCHANGE CENTER



UNIVERSITY MUSEUM

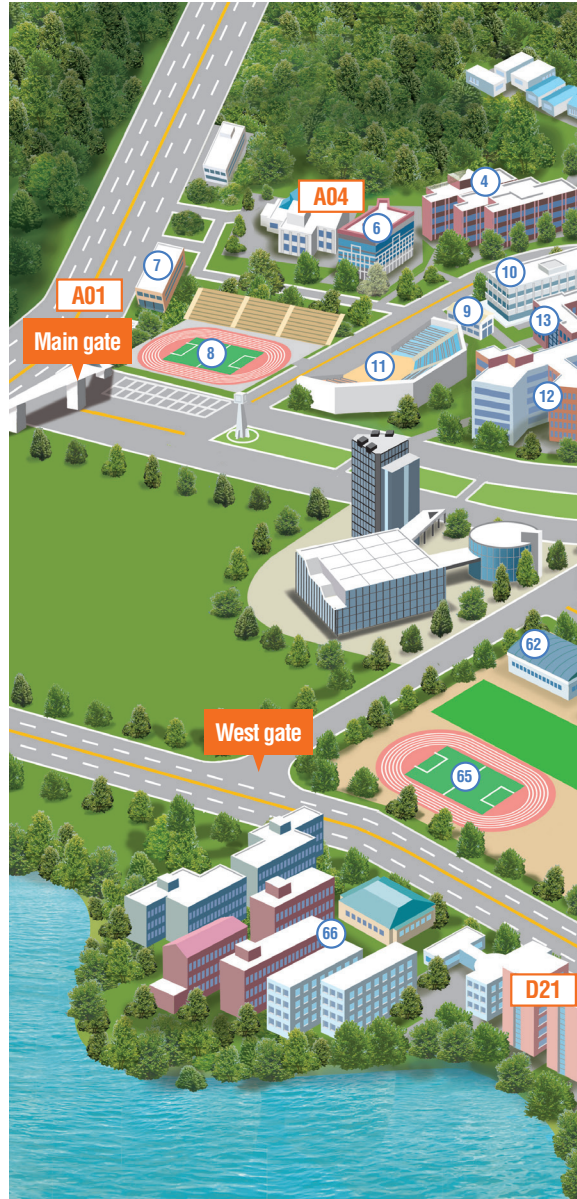


YEUNGNAM UNIVERSITY LIBRARY



# Campus Map

- A01 Chunma Gate / YU Metro Square
- A04 University Museum
- B04 Central Library
- C01 Headquarters
- D21 Hyangto Hall
- E01 Chunma Arts Center Tower
- 1 Cafeteria of Liberal Arts
- 2 College of Education Building
- 3 College of Design & Art - Art Building
- 4 College of Design & Art - Design Building
- 5 College of Music
- 6 Student Support Center
- 7 International Center
- 8 Soccer Field
- 9 Memorial Gymnasium of Heekun Lee
- 10 Student Center
- 11 Amphitheater
- 12 College of Business & Economics Building
- 13 Law & Political Science Building
- 14 College of Political Science and Public Administration
- 15 Evening Programs Hall
- 16 College of Liberal Arts
- 17 General Lecture Hall
- 18 Liberal Arts Hall 2
- 19 Foreign Language Institute
- 20 Baseball Field
- 21 ROTC
- 22 Folklore Garden
- 23 Law School Library
- 24 Law School
- 25 College of Human Ecology & Kinesiology
- 26 College of Human Ecology & Kinesiology (annex)
- 27 Mirror Pond
- 28 Laboratory Animal Breeding Center
- 29 Sciences Building 1
- 30 Sciences Building 2
- 31 Sciences Building 3
- 32 Science Library
- 33 College of Pharmacy
- 34 Architecture Building
- 35 Computer & IT Center
- 36 Ins' of Information & Computing Systems
- 37 Construction Engineering Building
- 38 College of Science Cafeteria
- 39 Biotechnology Hall
- 40 HQ: College of Natural Resources
- 41 Lab III, College of Natural Sciences
- 42 Lab II, College of Natural Sciences
- 43 Information & Telecommunication Hall
- 44 Electrical Engineering Building
- 45 Textile Engineering Building
- 46 Chemical Engineering Building
- 47 M.E.Practice Factory
- 48 Water Research Laboratory Building
- 49 Materials Engineering Building
- 50 Mechanical Engineering Building
- 51 Production Technology Research Center
- 52 Annex: Center for Research Facilities
- 53 I-A Co-operation Technology Center
- 54 Wind Tunnel Laboratory
- 55 Laboratory Plant
- 56 1st Manufacturing Laboratory
- 57 Security Education Practice Yard
- 58 2nd Manufacturing Laboratory
- 59 Gyeongbuk Technopark
- 60 Convergence Research Center
- 61 Business Incubation Center
- 62 Gymnastics Arena
- 63 Chunma Arena
- 64 Basketball Court
- 65 Artificial turf Arena
- 66 Dormitory
- 67 Gyeongbuk Global Exchange Center
- 68 Pond
- 69 YU Info Lounge (B1)





OFFICE OF EXTERNAL COOPERATION  
YEUNGNAM UNIVERSITY

280 Daehak-ro, Gyeongsan, Gyeongbuk, Republic of Korea(38541 Korea)  
Tel: +82-53-810-7871~5 Fax: +82-53-813-4016 <http://www.yu.ac.kr>